

## Accommodation List

No.	Property Name	Layout	Floor Space (m <sup>2</sup> )	Monthly fee (JPY)	Number of Flats
A	Higashikire Accommodation	2DK	52	375,000	85
		3DK	63	460,000	64
B	Moriguchi Accommodation	1K	25	323,000	71
		1LDK	30	335,000	89
		2LDK	45	480,000	15
C	Umeda Accommodation	1R-1	14.1	150,000	423
		1R-2	17.0	180,000	264
		1R-3	19.9	210,000	109
		1R-4	20.7	216,000	28
		1R-5	27.2	267,000	50
		1R-6	33.1	328,000	36
		1R-7	46.0	458,000	2
		2R-1	19.9+27.2	477,000	9

note	1K	1room+kitchen
	1LDK	1room+living room+dining room+kitchen
	2DK	2rooms+dining room+kitchen
	2LDK	2rooms+living room+dining room+kitchen
	3DK	3rooms+dining room+kitchen
	1R	1room
	2R	2rooms (connecting room)

\*All flats have bathrooms and toilets.

\*Only for Property C (Umeda Accommodation), basic and usage fee of water supply, electricity, and gas are all included in the Monthly fee.

\*For more information on each property, see the following pages and beyond.

A Higashikire Accommodation  
(Wing 2, Housing 5 of Osaka Municipal Higashikire)

Address: 5-1 Kirehigashi Hirano-ku Osaka City

Number of flats: 149

Structure: reinforced concrete, steel-framed reinforced concrete

Scale: 12 floors, 1 building, 2 elevators

Flats:

Layout	Floor Space(m <sup>2</sup> )	Monthly fee (JPY)	Number of Flats
2DK	52	375,000	85
3DK	63	460,000	64

※Some 3DK flats may be used by countries subject to the assistance programme for developing countries.

note	
2DK	2rooms+dining room+kitchen
3DK	3rooms+dining room+kitchen

Equipment: bathroom, restroom, refrigerator with freezer, set of beds, lighting, laundry machine with dryer, hanger rack, two-burner gas stove, electric kettle, microwave oven, curtain, work desk, office chair, air conditioning, internet connection, Parking space for bicycles

★Parking space (charge: JPY 12,600/month)

Note: The Parking space usage fee includes consumption tax.

\*Existing public housing in the Osaka City area. Located in a quiet residential area.

\*Located in Hirano-ku, Osaka City, an area where a sense of a traditional “old town” still remains.

\*Located in a residential area that is a five-minute walking distance from the closest station, Deto Station, on Osaka Metro’s Tanimachi Line.

\*Facilities for everyday living can be found nearby, including restaurants, convenience stores, supermarkets, and medical facilities.

\*Facilities such as parks can be found nearby.

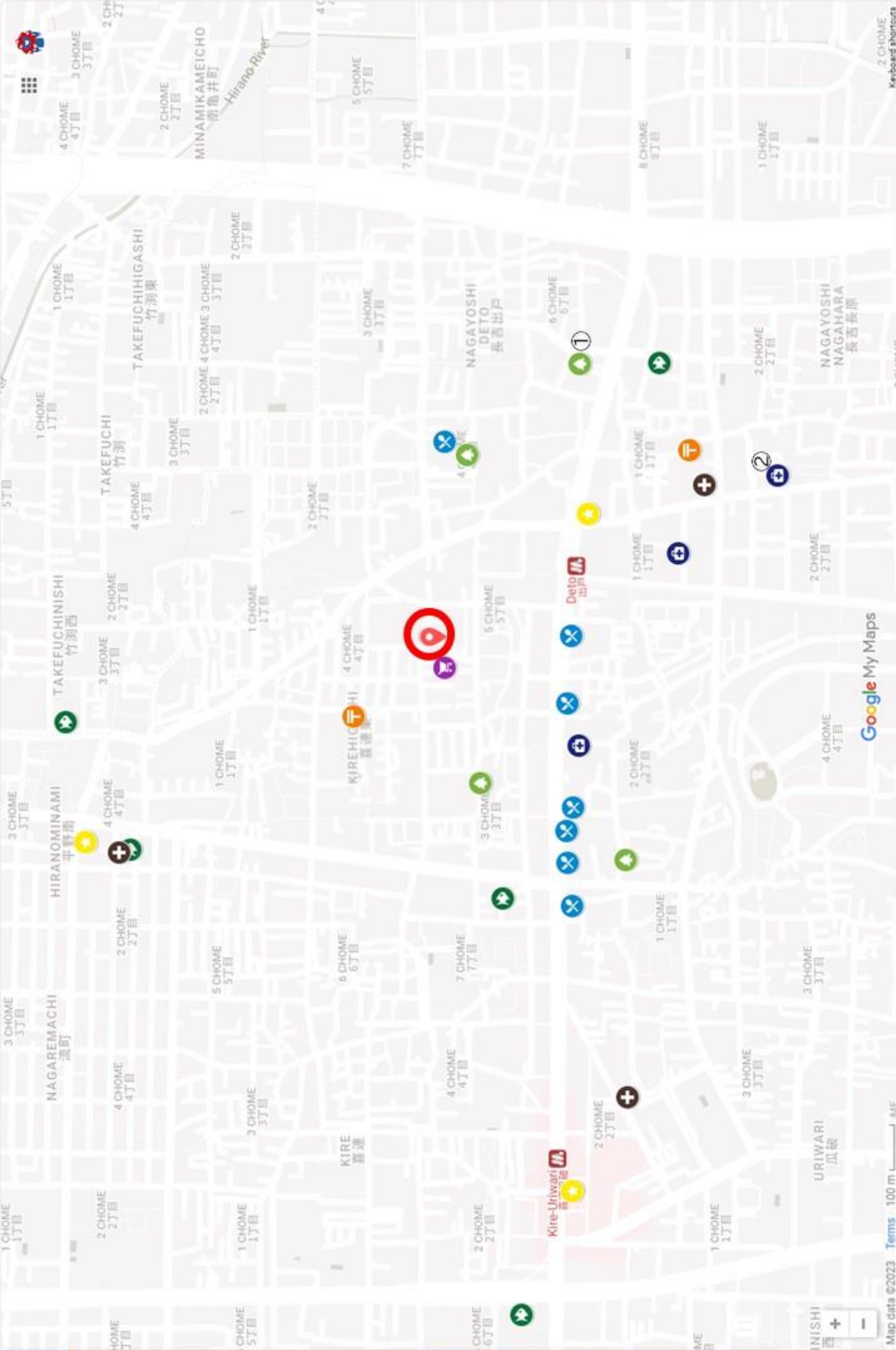
\*Close to Osaka’s downtown area, Tennoji, an area where zoos, art museums, shrines, and commercial facilities concentrate.

\*Shoes may not be worn in separated spaces of any flat.

Users are asked to use indoor slippers.

\*Smoking is prohibited in all separated spaces.

Location Map



- Hiragashikire Accommodation**
- Restaurant (7)
  - Supermarket (5)
  - Clinic (4)
  - Park (4)
  - Convenience store (3)
  - Drug store (3)
  - Post Office (2)
  - Hiragashikire Accommodation (1)
  - Shopping complex (1)



① Nagayoshi Deto Park



② Nagayoshi General Hospital

## ▼Exterior



## ▼Kitchen



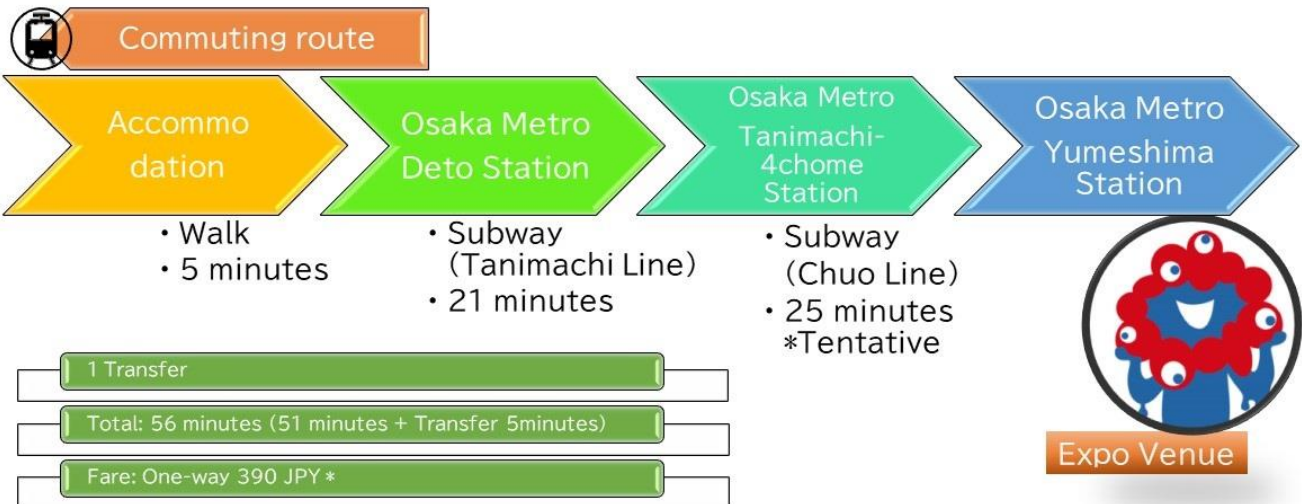
## ▼Balcony



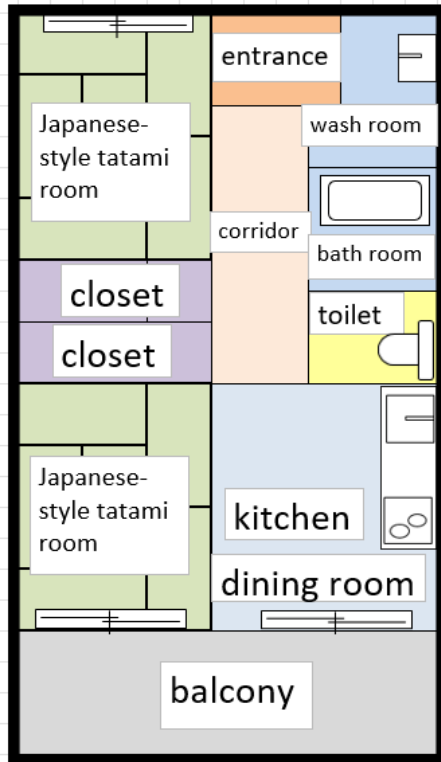
## ▼Bedroom



\*Furniture and appliances such as fridges, microwaves and beds are arranged by the Organiser.



\*Fares are to Cosmosquare Station, with an additional fare (to be determined) to Yumeshima Station.



## Layout

2DK

[Floor Space]

52m<sup>2</sup>

[Number of Flats]

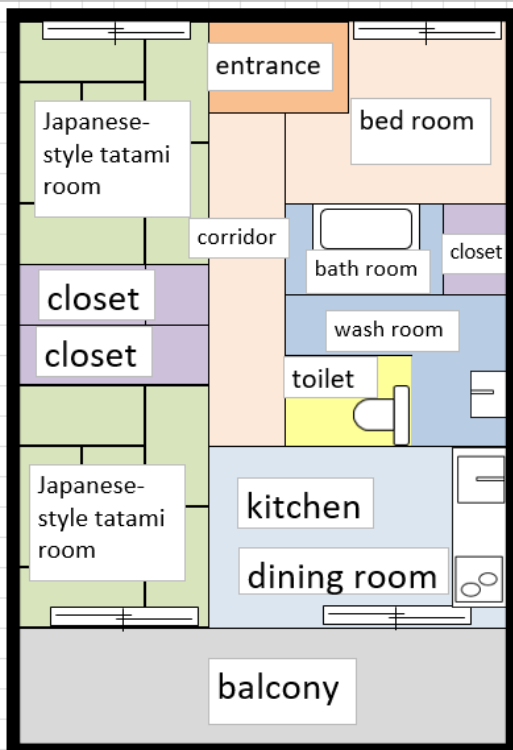
85Flats

Monthly Fee

375,000 JPY

Parking fee

12,600 JPY



## Layout

3DK

[Floor Space]

63m<sup>2</sup>

[Number of Flats]

64Flats

Monthly Fee

460,000 JPY

Parking fee

12,600 JPY

## B Moriguchi Accommodation (Wellith URBAN Moriguchi)

Address: 2-2 Hiyoshicho Moriguchi City (tentative)

Number of flats : 175

Structure: reinforced concrete

Scale: 10 floors, 1 building, 2 elevators

Flats :

Layout	Floor Space(m <sup>2</sup> )	Monthly fee (JPY)	Number of Flats
1K	25	323,000	71
1LDK	30	335,000	89
2LDK	45	480,000	15

note	
1K	1room+kitchen
1LDK	1room+living room+dining room+kitchen
2LDK	2rooms+living room+dining room+kitchen

Equipment: bathroom, restroom, refrigerator with freezer, set of beds, lighting, laundry machine with dryer, IH stove, electric kettle, microwave oven, curtain, air conditioning, internet connection, work desk or dining table, chair, Parking space for bicycles

\*A newly built rental housing in Moriguchi City.

\*Adjacent to a commercial facility, making it convenient for shopping.

\*The riverbed of the Yodogawa River, which runs in the northern area, has been developed as a park.

\*A two-minute walking distance from the closest station, Moriguchi Station, on Osaka Metro's Tanimachi Line. Also within 1 km from Moriguchishi Station on Keihan Main line, allowing convenient access not only to Osaka but also to Kyoto.

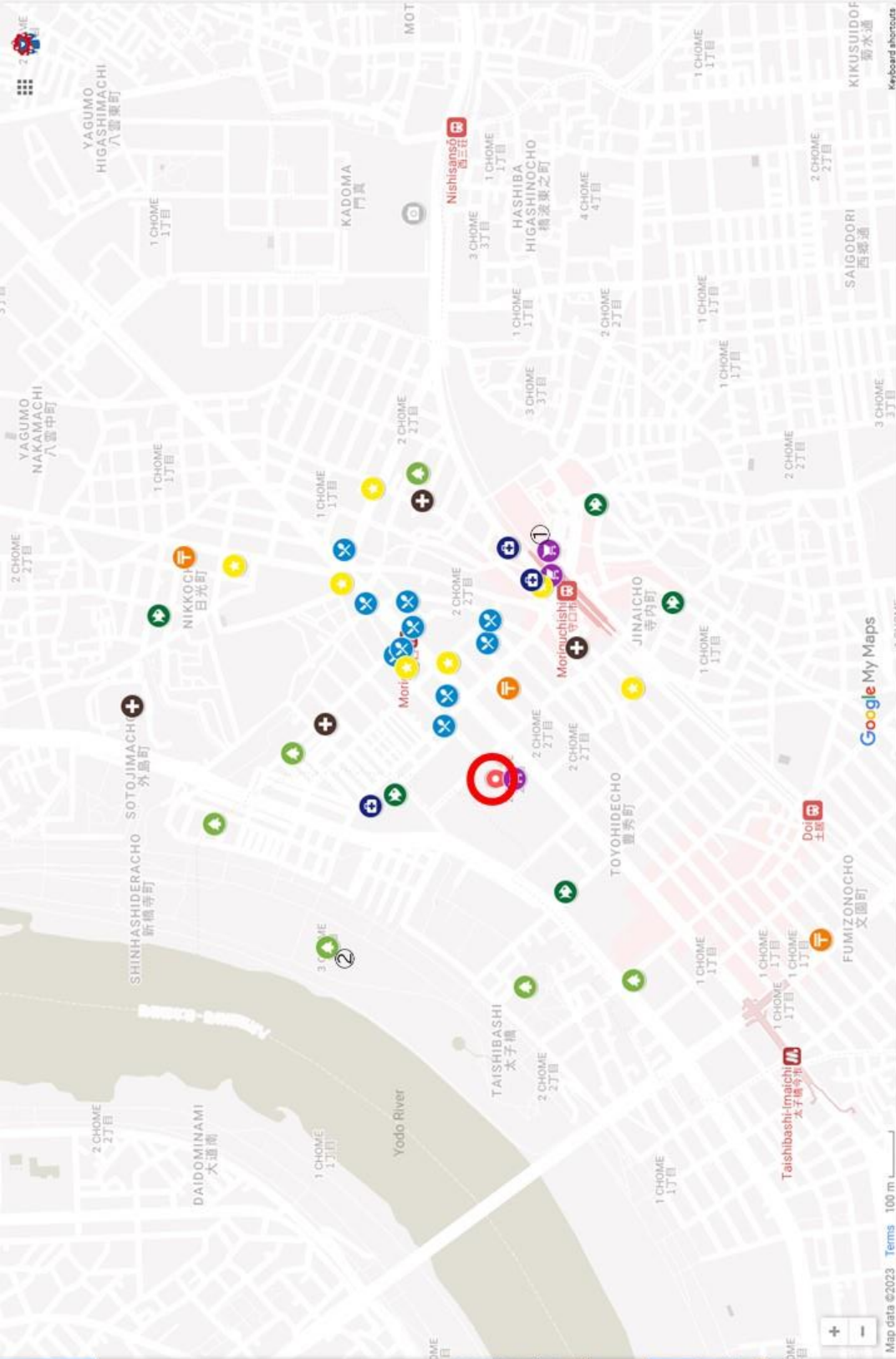
\*Many facilities for everyday living can be found nearby, including restaurants, convenience stores, supermarkets, and medical facilities.

\*Shoes may not be worn in separated spaces of any flat .

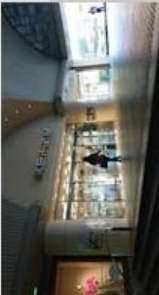
Users are asked to use indoor slippers.

\*Smoking is prohibited in the property plot.

Location Map



- Wellith Urban Moriguchi**
- Restaurant (10)
  - Convenience store (7)
  - Park (6)
  - Supermarket (5)
  - Clinic (4)
  - Drug store (4)
  - Shopping complex (4)
  - Post Office (3)
  - Sightseeing spot (1)
  - Wellith URBAN Moriguchi (1)



①Keihan Department

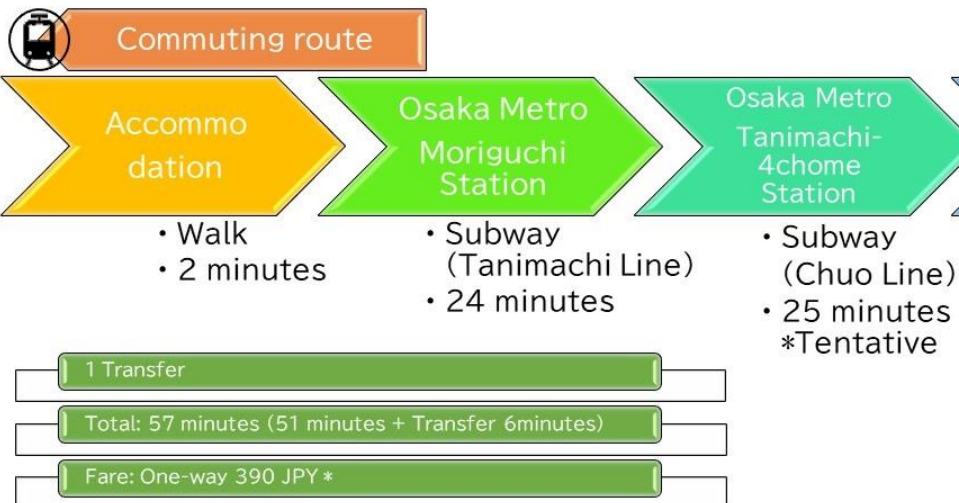


②Yodogawa Riverside Park

## ▼Exterior (image)



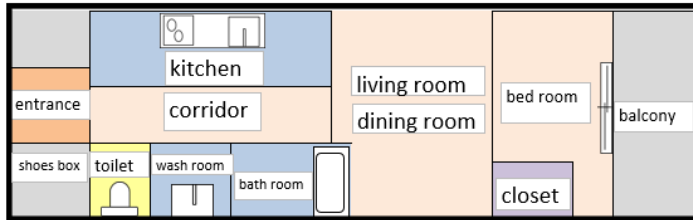
## ▼ Adjacent commercial facility (image)



Expo Venue

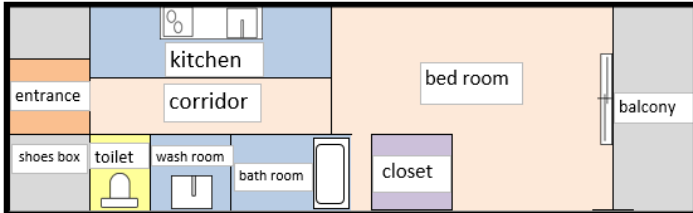
\*Fares are to Cosmosquare Station, with an additional fare (to be determined) to Yumeshima Station.  
 \* The opening period of the currently constructed new station, Yumeshima Station, is not yet decided.





## Layout

1K

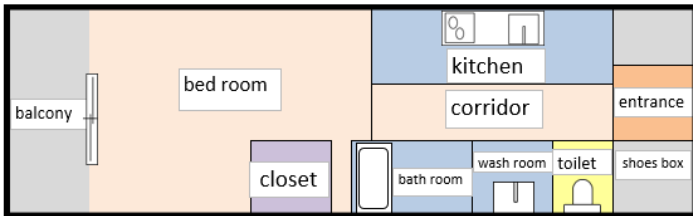


[Floor Space]

25m<sup>2</sup>

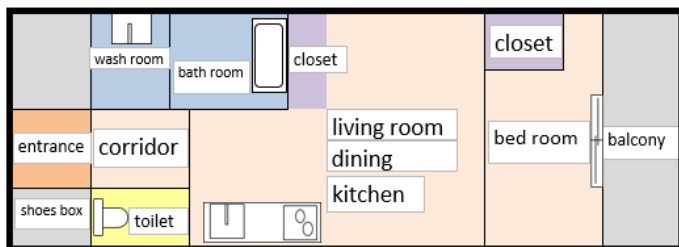
[Number of Flats]

71 Flats



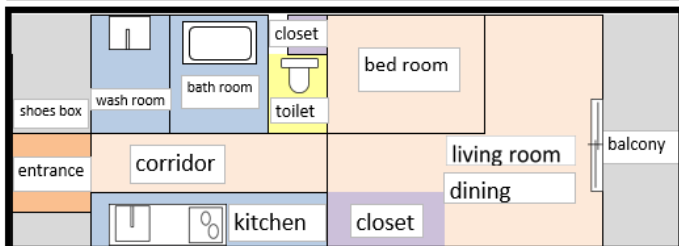
Monthly Fee

323,000JPY



## Layout

1LDK



[Floor Space]

30m<sup>2</sup>

[Number of Flats]

89 Flats

Monthly Fee

335,000JPY

## Layout

2LDK

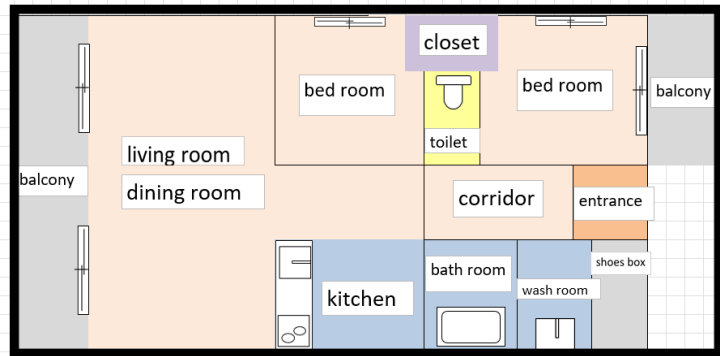
[Floor Space]

45m<sup>2</sup>[Number of  
Flats]

15Flats

Monthly  
Fee

480,000JPY



## C Umeda Accommodation (tentative)

Address: 1-1-35 Shibata Kita-ku Osaka City

Number of flats: 921

Structure: steel-framed reinforced concrete

Scale: 10 floors, elevator

Flats :

Layout	Floor Space(m <sup>2</sup> )	Monthly fee (JPY)	Number of Flats
1R-1	14.1	150,000	423
1R-2	17.0	180,000	264
1R-3	19.9	210,000	109
1R-4	20.7	216,000	28
1R-5	27.2	267,000	50
1R-6	33.1	328,000	36
1R-7	46.0	458,000	2
2R-1	19.9+27.2	477,000	9

note	
1R	1room
2R	2rooms (connecting room)

Equipment: small refrigerator, set of beds, lighting, work desk, hanger rack or pole hanger, electric kettle, curtain, office chair, air conditioning, internet connection, bathroom, restroom

Note: Some rooms do not have bathtubs but only showers.

Common area: IH stove, microwave oven, iron, vacuum cleaner, refrigerator with freezer, laundry machine with dryer

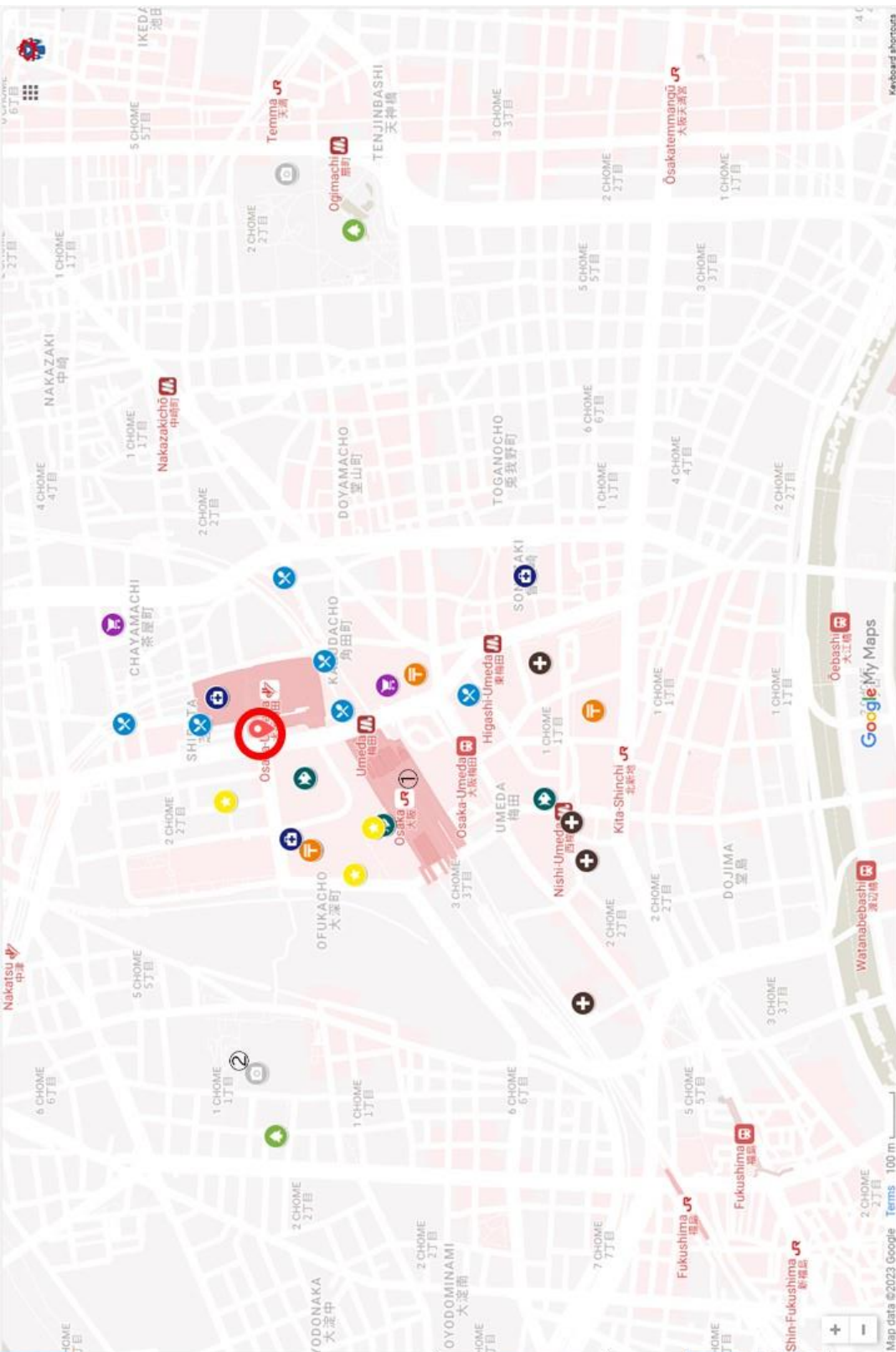
\*Large facility in central Osaka that used to be operated as a hotel.

\*Since rooms have one bedroom each, the maximum number of users is one for all rooms. However, for only 2R-1 (connecting room), users of up to two persons are allowed. When moving in without using it as a connecting room, the room can be divided into two single rooms and used as 1R-3 and 1R-5, respectively.

\*Only for this property, basic and usage fee of water supply, electricity, and gas are all included in the Property usage fee, so there is no need to sign a separate contract with a water, electricity or gas supplier.

- \*In each room, although there are no kitchens or laundry machines, a bathroom, restroom, small refrigerator, and electric kettle are provided. (Some rooms have no bathtubs, but all rooms come with showers.)
- \*A kitchen and laundry machine with a dryer can be found in the common area. Additionally, a spacious social space is provided to enjoy meals in large numbers of people. However, parties other than residents may not enter the facility. Details on rules of use will be provided in a guidebook for residents.
- \*Three-minute walking distance from the closest station, Umeda Station, on Osaka Metro's Midosuji Line.
- \*Also close to the JR Osaka Station, a location with very good transport access. The JR Osaka Station is not only directly connected to Kobe, Kyoto, and Nara, but also one stop away from Shin-Osaka Station, giving it excellent access to Shinkansen bullet trains.
- \*Further, a bus stop for a shuttle bus to Kansai International Airport and Itami Airport (Osaka International Airport; only for domestic flights) can be found nearby and is convenient.
- \*Many facilities for everyday living can be found nearby, including numerous restaurants, large household appliance stores and department stores, convenience stores, supermarkets, and numerous medical facilities. In particular, the area surrounding Umeda Station has the highest number of restaurants in Osaka Prefecture.
- \*Since there are no Parking spaces in the property plot, if users use cars, they will be required to individually contract nearby Parking spaces. The Association will not intermediate for contracts.
- \*The property will regularly provide exchange bedsheets, but users will be required to make beds on their own.
- \*Several utility rooms will be prepared on each floor and equipped with refrigerators with freezers, microwave ovens, toasters, irons and ironing boards, and vacuum cleaners. All of these will be shared.
- \*Shoes may be worn only in this Umeda Accommodation. However, some utility rooms partially use tatami, and users are asked to take shoes off only for the tatami areas.
- \*Smoking is prohibited in all separated spaces.

Location Map



- Umeda Accommodation**
- Restaurant (10)
  - Clinic (5)
  - Shopping complex (5)
  - Convenience store (4)
  - Drug store (3)
  - Post Office (3)
  - Supermarket (3)
  - Park (2)
  - Sightseeing spot (2)
  - Umeda Accommodation (1)



① Osaka Station

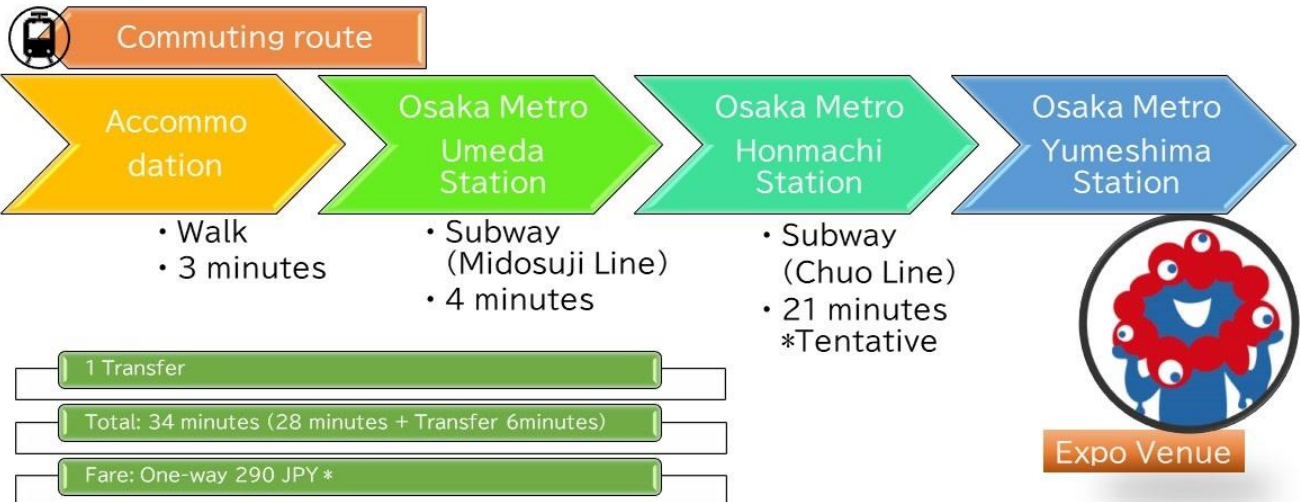


② Sky Building

## ▼Exterior

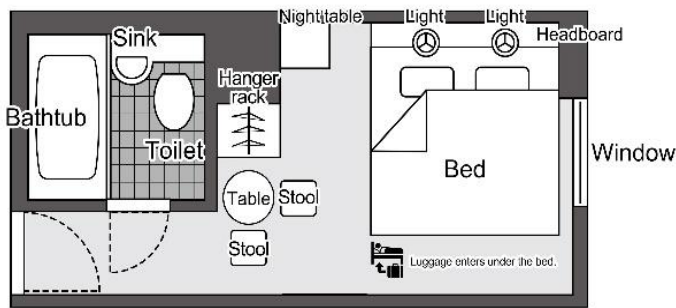
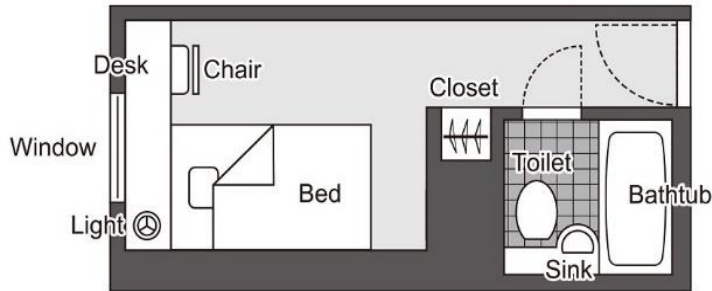


## ▼Interior(Example[1R-4 20.7㎡])



\*Fares are to Cosmosquare Station, with an additional fare (to be determined) to Yumeshima Station.

(Examples)



Layout

1R-1

[Floor Space]

14.1m<sup>2</sup>

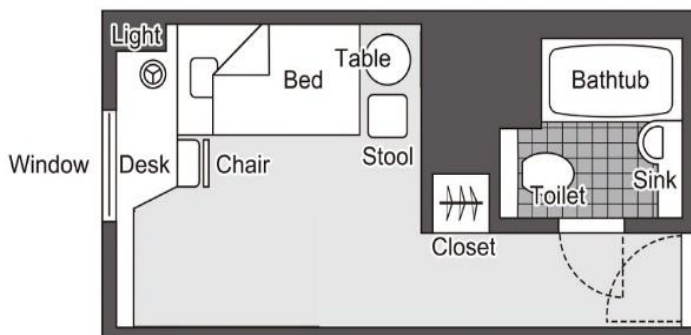
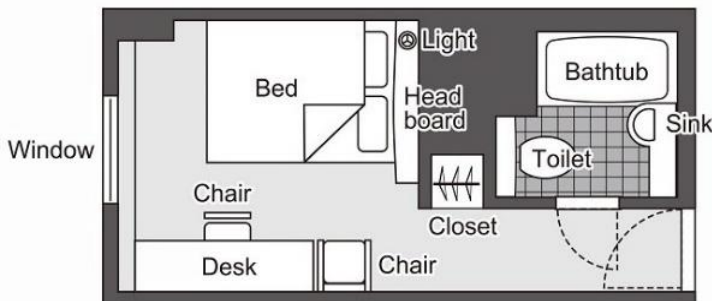
[Number of Flats]

423Flats

Monthly Fee

150,000 JPY

(Examples)



Layout

1R-2

[Floor Space]

17.0m<sup>2</sup>

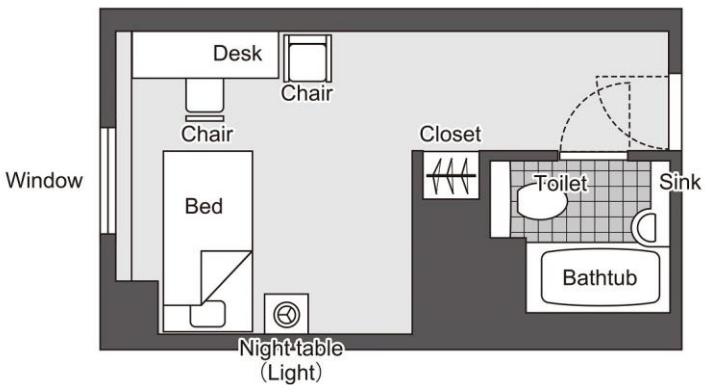
[Number of Flats]

264Flats

Monthly Fee

180,000 JPY

(Example)



### Layout

# 1R-3

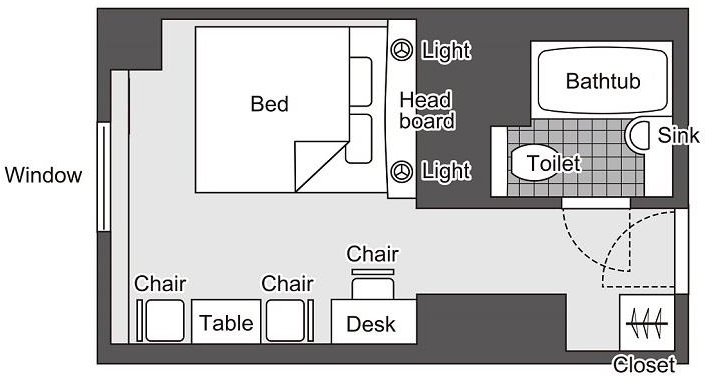
[Floor Space]  
**19.9m<sup>2</sup>**

[Number of Flats]  
**109Flats**

Monthly Fee

210,000 JPY

(Example)



### Layout

# 1R-4

[Floor Space]  
**20.7m<sup>2</sup>**

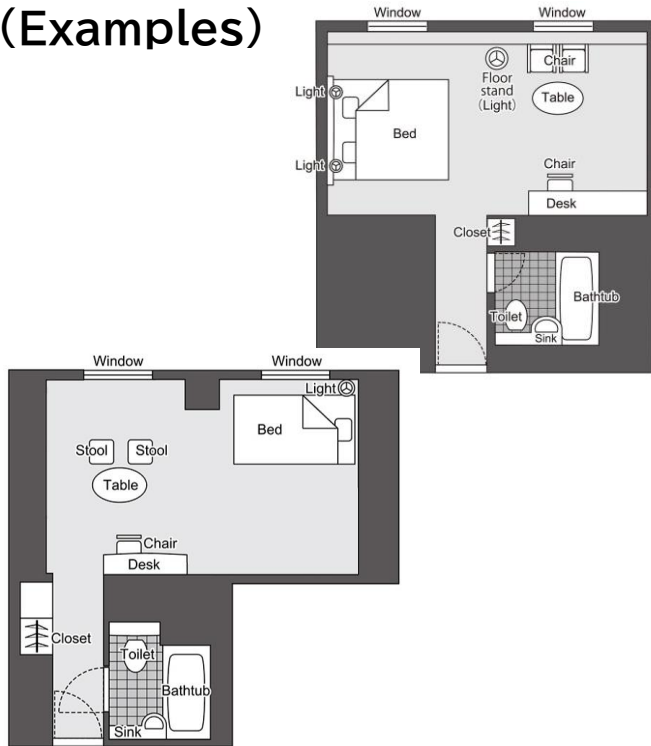
[Number of Flats]  
**28Flats**

Monthly Fee

216,000 JPY



(Examples)



Layout

1R-5

[Floor Space]

27.2m<sup>2</sup>

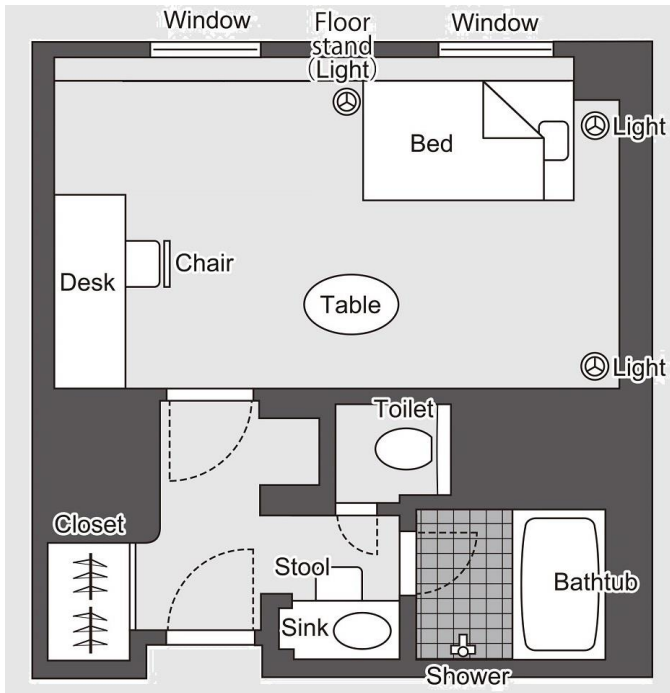
[Number of Flats]

50Flats

Monthly Fee

267,000 JPY

(Example)



Layout

1R-6

[Floor Space]

33.1m<sup>2</sup>

[Number of Flats]

36Flats

Monthly Fee

328,000 JPY

## Layout

1R-7

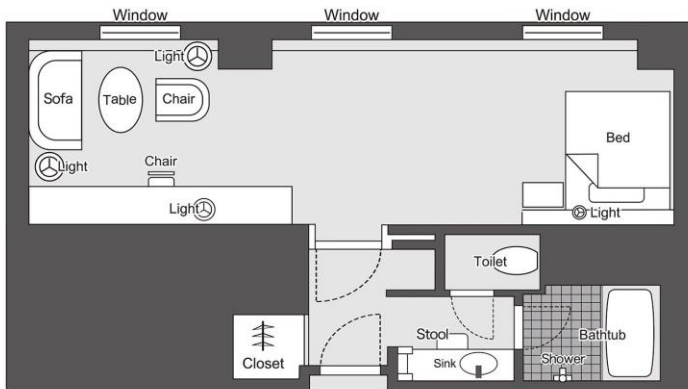
[Floor Space]

46.0m<sup>2</sup>[Number of  
Flats]

2Flats

Monthly  
Fee

458,000 JPY



## (Example)

## Layout

2R-1

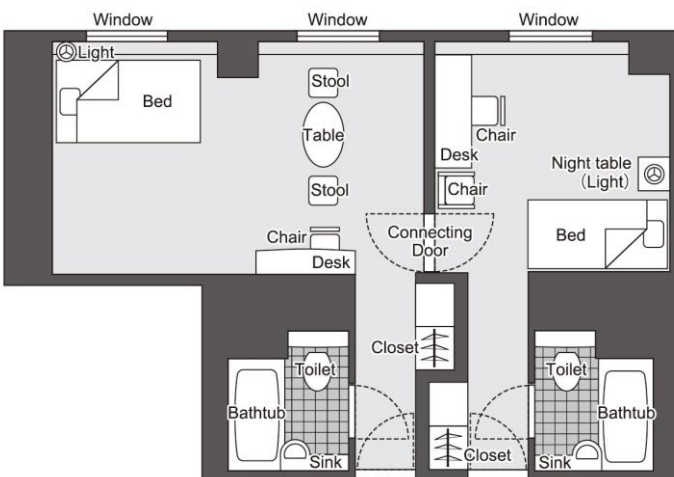
[Floor Space]

19.9m<sup>2</sup>  
+27.2m<sup>2</sup>[Number of  
Flats]

9Flats

Monthly  
Fee

477,000 JPY



- \*For the 2R-1 floor plan only, up to two persons may move in.
- \*For use by one person, either bed will be removed.
- \*If there are no reservations, it will be sold by each room.  
(19.9m<sup>2</sup> -> 1R-3, 27.2m<sup>2</sup> -> 1R-5)